

28V High Efficiency 1MHz Step Up Regulator

FEATURES

- Integrated 80mΩ Power MOSFET
- 2.7V to 24V Input Voltage
- 1MHz Fixed Switching Frequency
- Internal 3A Switch Current Limit
- Adjustable Output Voltage
- Internal Compensation
- Up to 28V Output Voltage
- Automatic Pulse Frequency Modulation Mode at Light Loads
- Available in a 6-Pin SOT23-6 Package

APPLICATIONS

- Battery-Powered Equipment
- Set-Top Boxed
- White LED Driver
- Power Bank
- DSL and Cable Modems and Routers

GENERAL DESCRIPTION

The STI3508B is a constant frequency, 6-pin SOT23 current mode step-up converter intended for small, low power applications. The STI3508B switches at 1MHz and allows the use of tiny, low cost capacitors and inductors 2mm or less in height. Internal soft-start results in small inrush current and extends battery life.

The STI3508B features automatic shifting to pulse frequency modulation mode at light loads. The STI3508B includes under-voltage lockout, current limiting, and thermal overload protection to prevent damage in the event of an output overload. The STI3508B is available in a small SOT23-6 package.

APPLICATIONS CIRCUITS

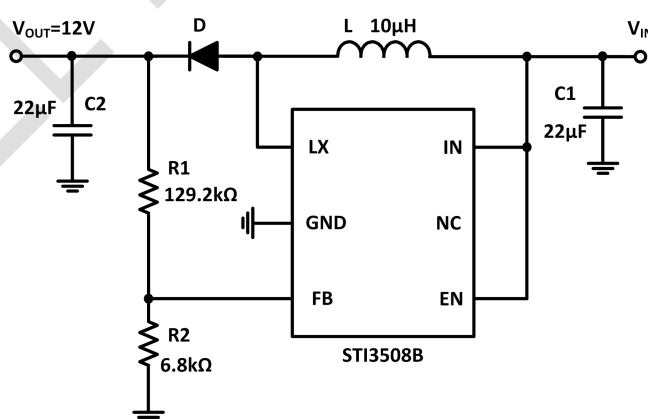


Figure 1. Basic Application Circuit